

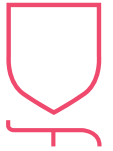
GRAND TERRACE PLOT 49 & 50

5 bedroom home

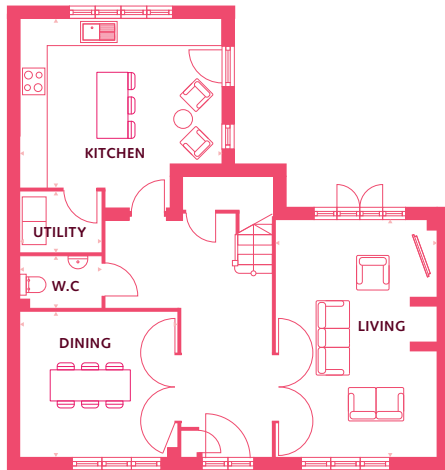
Internal area: 214.2sq.m / 2305.7sq.ft

Layout shown is of plot 50

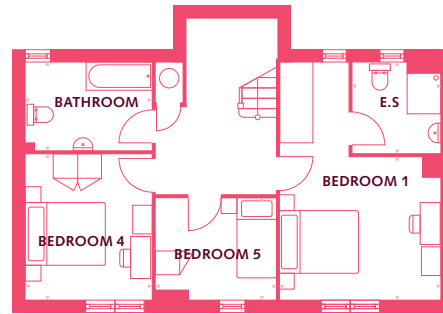
Plot handed: 49*



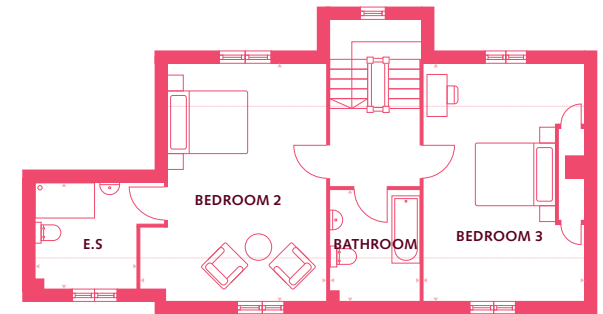
DUCHY FIELD



GROUND FLOOR



FIRST FLOOR



SECOND FLOOR

GROUND FLOOR

Dimensions	m	ft
Living Room	5.85m x 4.00m	19'2" x 13'1"
Dining	3.90m x 3.55m	12'9" x 11'9"
WC	1.95m x 1.25m	6'5" x 4'1"
Kitchen	4.95m x 4.15m	16'2" x 13'8"
Utility	1.95m x 1.50m	6'5" x 4'11"

FIRST FLOOR

Dimensions	m	ft
Bedroom 1	4.00m x 3.50m	13'1" x 11'7"
En-suite	2.20m x 2.20m	7'2" x 7'2"
Bedroom 5	3.00m x 2.50m	9'11" x 8'2"
Bedroom 4	3.60m x 3.10m	11'9" x 10'3"
Bathroom	3.10m x 2.15m	10'3" x 7'

SECOND FLOOR

Dimensions	m	ft
Bedroom 3	5.85m x 3.95m	19'2" x 13'
Bathroom	2.70m x 2.20m	8'11" x 7'3"
Bedroom 2	5.85m x 3.95m	19'2" x 11'12"
En-suite	2.60m x 2.55m	8'6" x 8'4"

Please note: All layouts and floor plans, configurations, maps and information are intended for guidance only and accuracy of this information cannot be relied upon by prospective purchasers who must make their own enquiries to satisfy themselves by inspection or otherwise as to the correct detail.

A development by



Part of Places for People