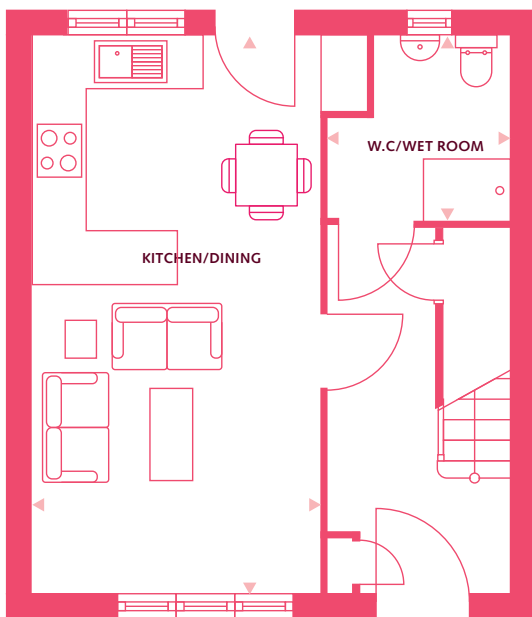


NORTH EAST MEWS PLOTS 54 & 56

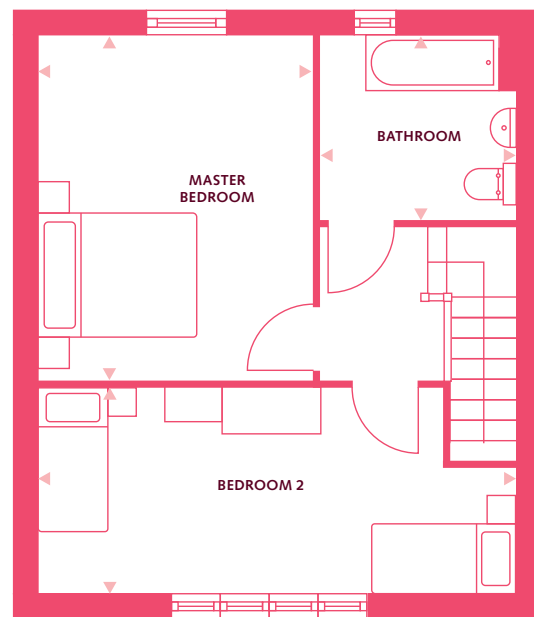
2 bedroom home
Internal area: 80.4m² / 865.4 ft²



DUCHY FIELD



GROUND FLOOR



FIRST FLOOR

GROUND FLOOR

Dimensions	m	ft
Kitchen/Dining	6.96m x 3.60m	22'9" x 11'9"
WC/Wet Room	2.30m x 2.30m	7'6" x 7'6"

FIRST FLOOR

Dimensions	m	ft
Master Bedroom	4.30m x 3.40m	14'1" x 11'2"
Bedroom 2	6.00m x 2.55m	19'8" x 8'4"
Bathroom	2.30m x 2.50m	7'6" x 8'2"

Please note: All layouts and floor plans, configurations, maps and information are intended for guidance only and accuracy of this information cannot be relied upon by prospective purchasers who must make their own enquiries to satisfy themselves by inspection or otherwise as to the correct detail.

For more information call
01865 269010
summertown@savills.com

A development by



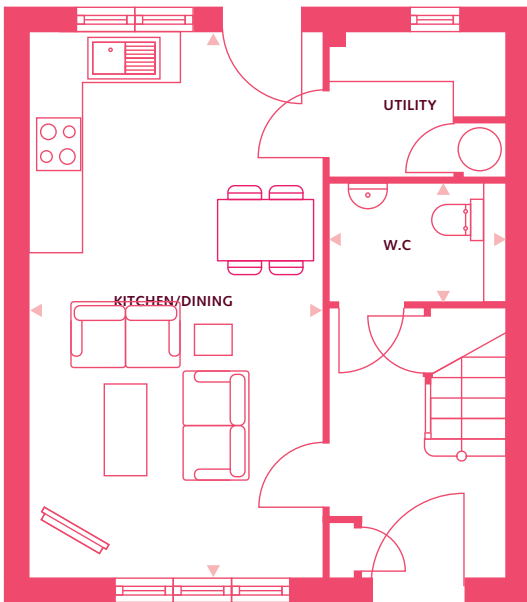
Part of Places for People

SCHOOL LANE COTTAGES PLOT 58 (PLOT 61 HANDED)

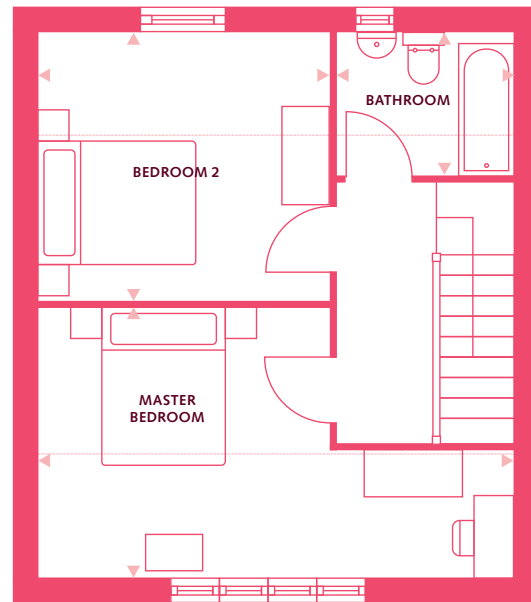
2 bedroom home
Internal area: 79.5m² / 854.7ft²



DUCHY FIELD



GROUND FLOOR



FIRST FLOOR

GROUND FLOOR

Dimensions	m	ft
Kitchen/Dining	6.85m x 3.65m	22'5" x 11'11"
WC	2.15m x 1.80m	7'1" x 5'10"
Utility	2.15m x 1.50m	7'1" x 4'11"

FIRST FLOOR

Dimensions	m	ft
Master Bedroom	3.65m x 3.35m	12' x 11'1"
Bedroom 2	3.65m x 3.35m	12' x 11'1"
Bathroom	2.15m x 1.80m	7'1" x 5'10"

Please note: All layouts and floor plans, configurations, maps and information are intended for guidance only and accuracy of this information cannot be relied upon by prospective purchasers who must make their own enquiries to satisfy themselves by inspection or otherwise as to the correct detail.

For more information call
01865 269010
summertown@savills.com

A development by



Part of Places for People