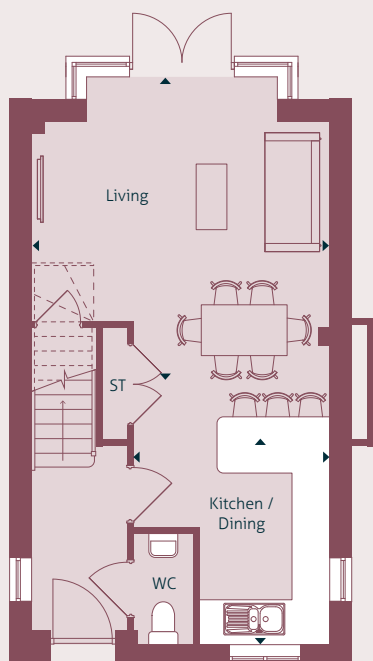


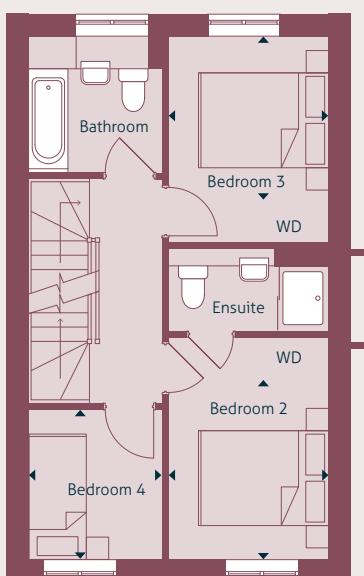
The Elm

Four bedroom semi-detached house

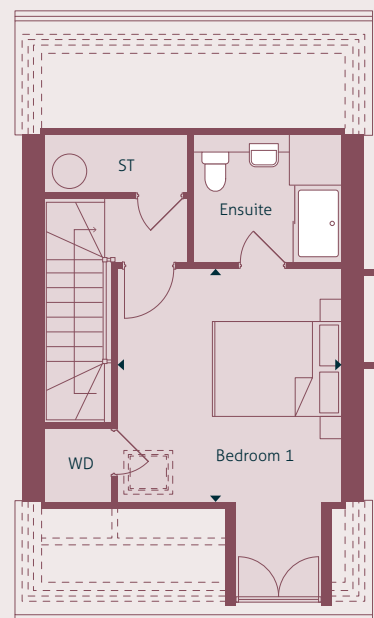
PLOT 10



GROUND FLOOR



FIRST FLOOR



SECOND FLOOR

Dimensions	m	ft
Living / Dining / Kitchen:	8.33m x 4.79m	27' 3" x 15' 7"
Bedroom 1:	3.70m x 3.51m	12' 1" x 11' 5"
Bedroom 2:	3.57m x 2.55m	11' 7" x 8' 3"
Bedroom 3:	3.27m x 2.55m	10' 7" x 8' 3"
Bedroom 4:	2.44m x 2.14m	8' 0" x 7' 0"

Layout shown is of plot 10

T: 01420 550 272
 E: woolmercopse@zeroc.co.uk
 www.zeroc.co.uk/woolmercopse

ZeroC
 Part of Places for People