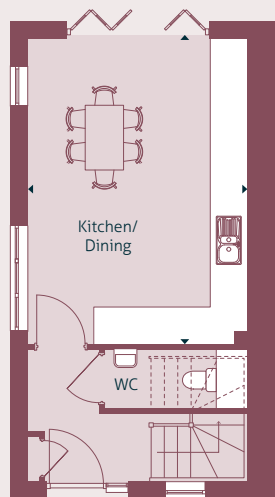


The Poplar

Three bedroom terraced house



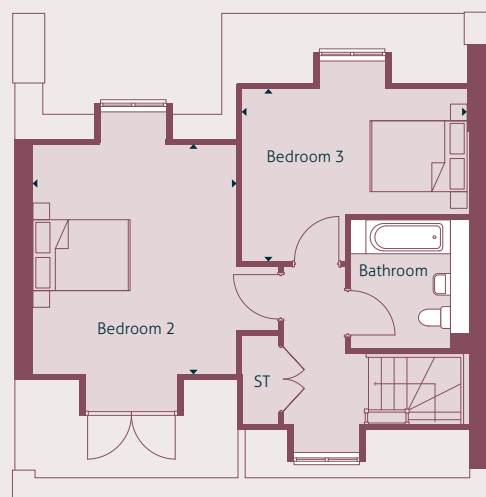
PLOTS 20-23



GROUND FLOOR



FIRST FLOOR



SECOND FLOOR

Dimensions	m	ft
Living	5.90m x 3.40m	19' 4" x 11' 2"
Kitchen / Dining	5.20m x 3.75m	17' 0" x 12' 3"
Bedroom 1	4.95m x 3.75m	16' 2" x 12' 3"
Bedroom 2	3.90m x 3.40m	12' 8" x 11' 2"
Bedroom 3	3.80m x 2.90m	12' 5" x 9' 5"

Internal area: 119sq.m / 1290sq.ft
Layout shown is of plot 23

T: 01420 550 272
E: woolmercopse@zeroc.co.uk
www.zeroc.co.uk/woolmercopse

 **ZeroC**
Part of Places for People

Please note: All layouts and floor plans, configurations, maps and information are intended for guidance only and accuracy of this information cannot be relied upon by prospective purchasers who must make their own enquiries to satisfy themselves by inspection or otherwise as to the correct detail.