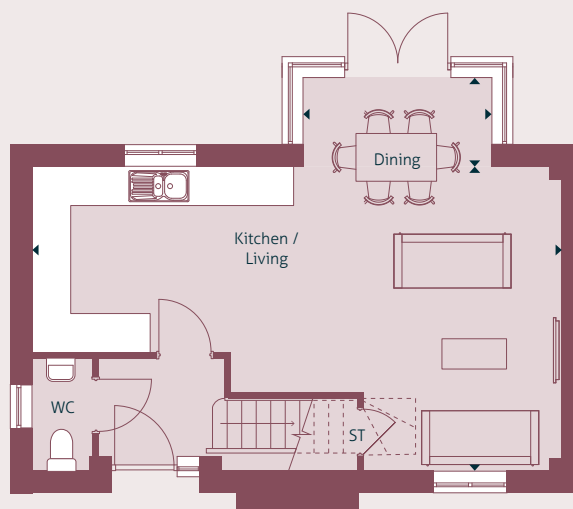


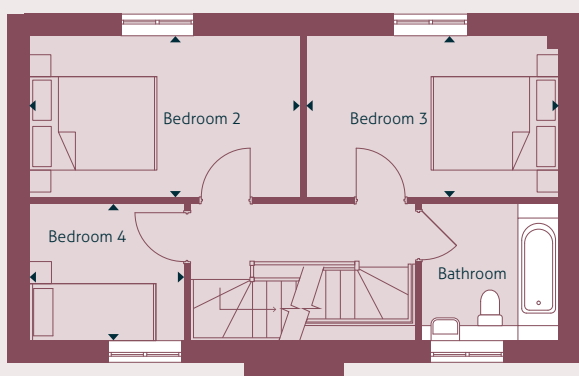
# The Lime

Four bedroom detached house

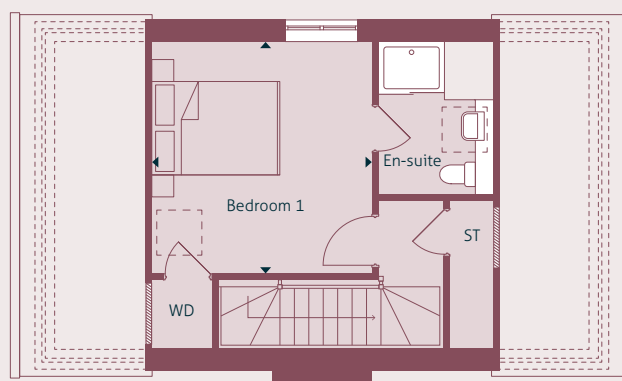
## PLOTS 17, 18 & 19



GROUND FLOOR



FIRST FLOOR



SECOND FLOOR

Dimensions	m	ft
Dining	2.98m x 1.35m	9' 8" x 4' 4"
Kitchen / Living	8.38m x 4.84m	27' 5" x 15' 9"
Bedroom 1	3.65m x 4.46m	12' 0" x 14' 6"
Bedroom 2	4.27m x 2.57m	14' 0" x 8' 4"
Bedroom 3	4.01m x 2.57m	13' 2" x 8' 4"
Bedroom 4	2.46m x 2.17m	8' 1" x 7' 1"

Internal area: 125sq.m / 1349sq.ft  
Layout shown is of plot 17

T: 01420 550 272  
E: woolmercopse@zeroc.co.uk  
www.zeroc.co.uk/woolmercopse

**ZeroC**  
Part of Places for People