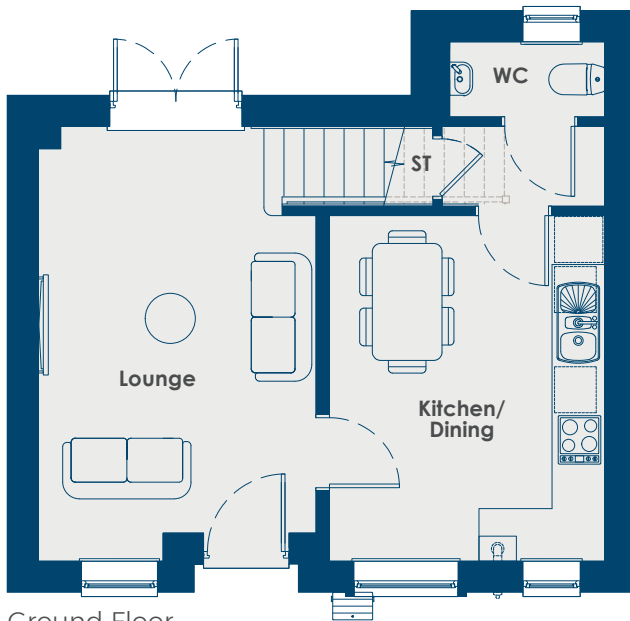




CASTLE COURT



PLOTS 37 & 40 ~ 2 BEDROOM HOUSE



Ground Floor



First Floor

Ground Floor

Lounge	5.21m x 3.32m	17'1" x 10'11"
Kitchen/Dining	4.14m x 3.30m	13'7" x 10'10"

First Floor

Bedroom 1	3.47m x 3.05m	11'4" x 10'
Bedroom 2	3.20m x 3.05m	10'6" x 10'
Bathroom	2.07m x 2.04m	6'9" x 6'8"

www.zeroc.co.uk/castlecourt

Please note: All layouts, kitchens, floor plans, configurations, maps and information are intended for guidance only and accuracy of this information cannot be relied upon by prospective purchasers who must make their own enquiries to satisfy themselves by inspection or otherwise as the correct detail.