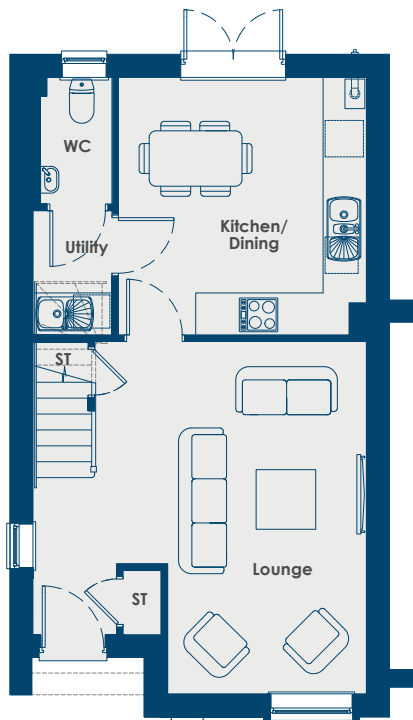




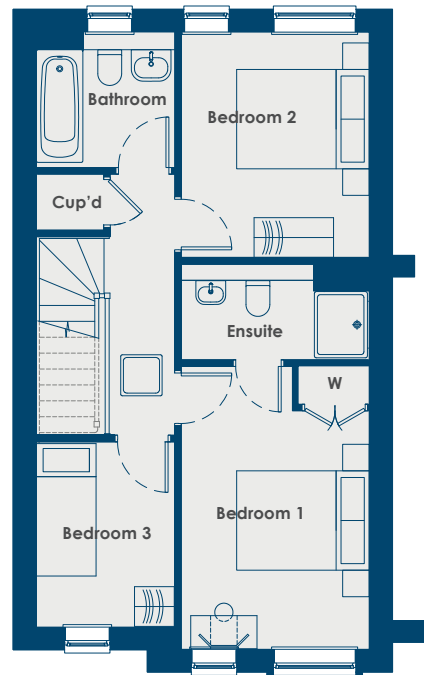
CASTLE COURT



PLOT 32 ~ 3 BEDROOM HOUSE



Ground Floor



First Floor

Ground Floor

Lounge	5.32m x 4.08m	17'5" x 13'5"
Kitchen/Dining	3.88m x 3.74m	12'9" x 12'3"

First Floor

Bedroom 1	4.26m x 2.84m	14'0" x 9'4"
Ensuite	2.84m x 1.45m	9'4" x 4'9"
Bedroom 2	3.39m x 2.84m	11'2" x 9'4"
Bedroom 3	2.79m x 2.09m	9'2" x 6'10"
Bathroom	2.09m x 2.04m	6'10" x 6'8"

www.zeroc.co.uk/castlecourt

Please note: All layouts, kitchens, floor plans, configurations, maps and information are intended for guidance only and accuracy of this information cannot be relied upon by prospective purchasers who must make their own enquiries to satisfy themselves by inspection or otherwise as the correct detail.