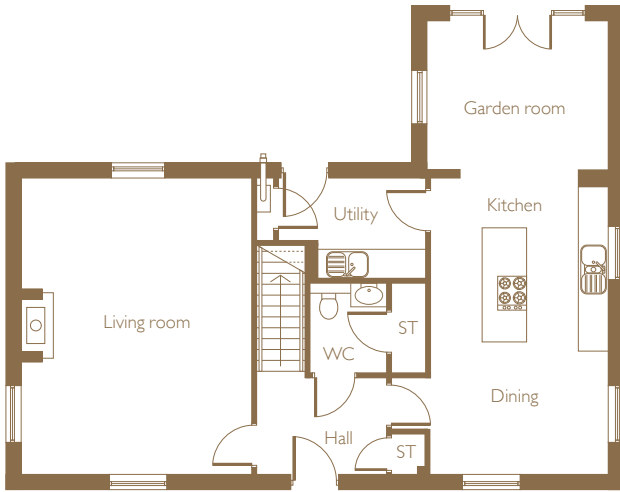




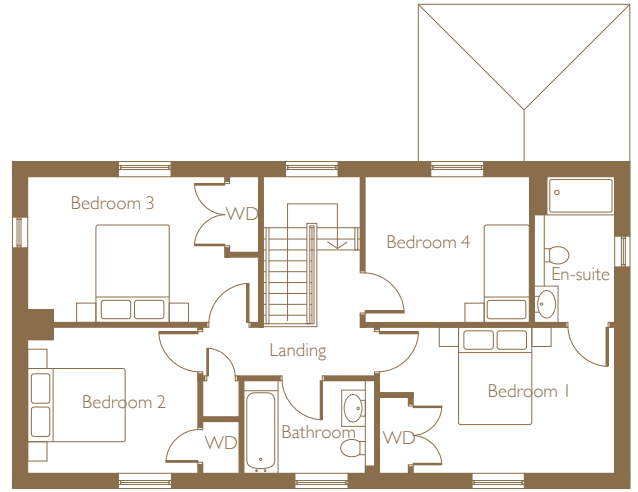
Four bedroom house
Plot 15.8



Four bedroom house
Plot 15.8



GROUND FLOOR



FIRST FLOOR

DIMENSIONS	m	ft
Living room	6.13m x 4.77m	20'1" x 15'8"
Kitchen / Dining	6.13m x 3.68m	20'1" x 12'1"
Utility	3.49m x 2.08m	11'5" x 6'10"
Garden room	3.75m x 3.09m	12'3" x 10'1"
Bedroom 1	4.87m x 3.02m	16'0" x 9'11"
En-suite	2.95m x 1.67m	9'8" x 5'6"
Bedroom 2	3.52m x 3.02m	11'6" x 9'11"
Bedroom 3	4.77m x 3.02m	15'8" x 9'11"
Bedroom 4	3.40m x 3.02m	11'2" x 9'11"
Bathroom	2.70m x 1.92m	8'10" x 6'3"

sales@zeroc-tornagrain.co.uk | www.zeroc-tornagrain.co.uk

01463 830 490

Please note: All layouts and floor plans, configurations, maps and information are intended for guidance only and accuracy of this information cannot be relied upon by prospective purchasers who must make their own enquiries to satisfy themselves by inspection or otherwise as to the correct detail. Sizes and dimensions approximate and subject to change. Image is for illustrative purposes only and is not representative of the actual colours and landscaping. Please consult your sales advisor for more information.