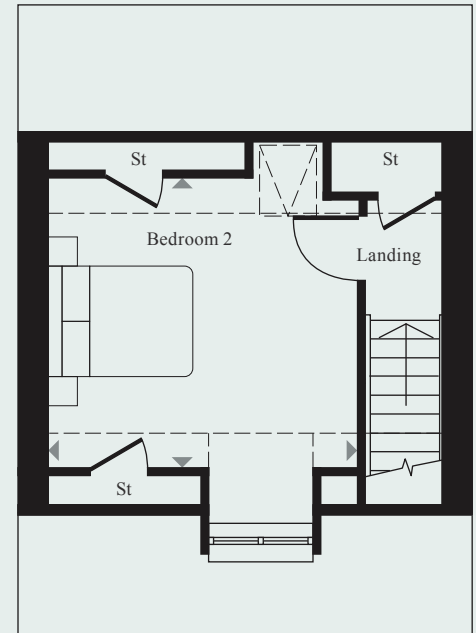
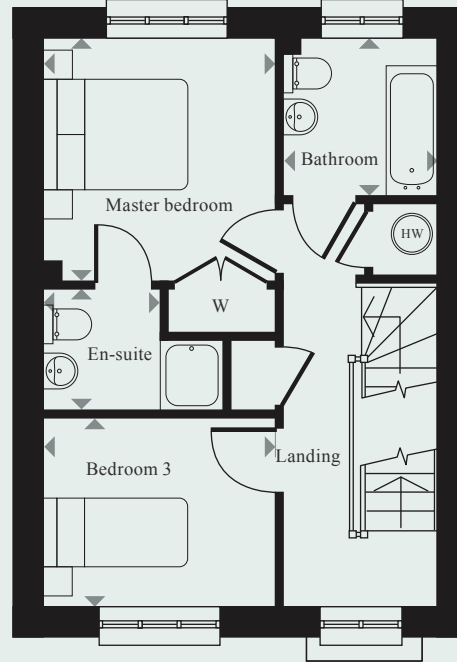
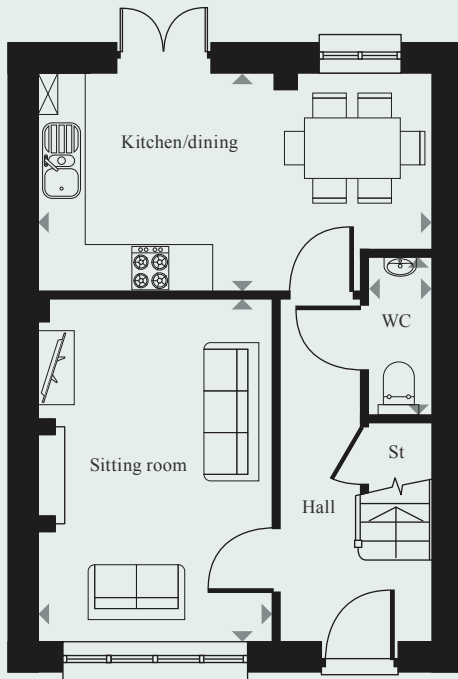
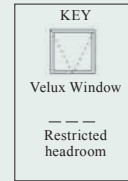


PLOTS 35 & 36: 3 BEDROOM TOWN HOUSE SET OVER 3 FLOORS

Total floor area:
97 sq.m / 1,044 sq.ft



GROUND FLOOR

	Metres	Feet
Sitting room	4.55 x 3.05	14'11" x 10'0"
Kitchen/dining	5.20 x 2.90	17'1" x 9'6"
WC	2.05 x 0.90	6'4" x 2'11"

FIRST FLOOR

	Metres	Feet
Master bedroom	3.15 x 3.05	10'4" x 10'0"
En-suite	1.60 x 1.55	5'3" x 5'0"
Bedroom 3	3.05 x 2.50	10'0" x 8'2"
Bathroom	2.10 x 2.05	6'10" x 6'9"

SECOND FLOOR

	Metres	Feet
Bedroom 2	4.10 x 3.80	13'6" x 12'6"

Floor plans are for illustrative purposes only, and room dimensions are maximum. Room sizes are believed to be accurate, although these may change during the construction process. Kitchen and bathroom layouts are indicative only. Specific plots may be handed. Illustrations are for guidance only. Total areas are based on Net Internal Areas. Please note floor plan alterations are subject to construction stage.