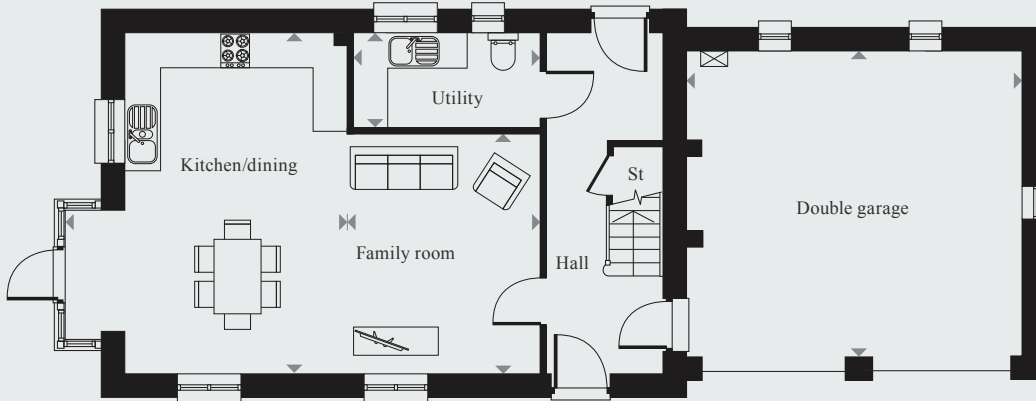
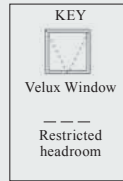


PLOT 45:

4 BEDROOM DETACHED HOUSE SET OVER 3 FLOORS

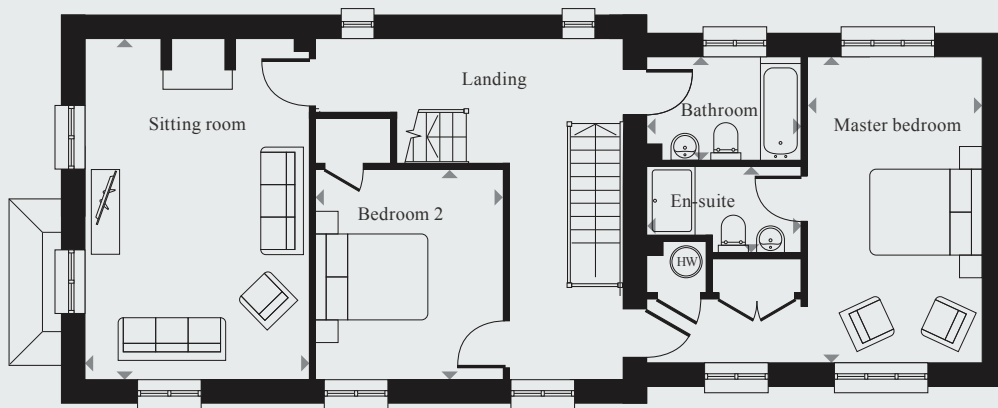
Total floor area:

184 sq.m / 1,981 sq.ft



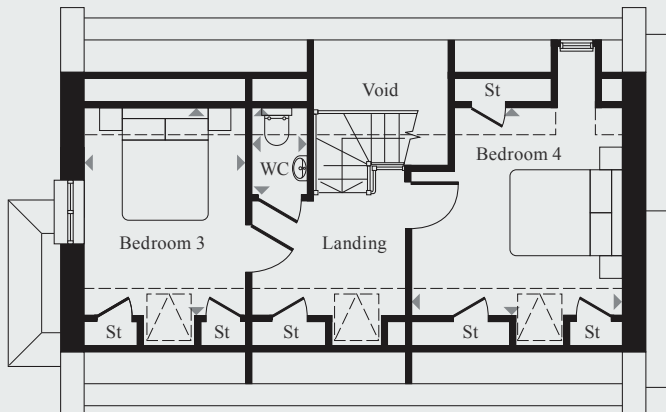
GROUND FLOOR

	Metres	Feet
Family room	4.50 x 4.25	14'9" x 13'11"
Kitchen/dining	6.00 x 3.90	19'8" x 12'11"
Utility	3.30 x 1.65	10'10" x 5'5"
Garage	5.95 x 5.45	19'6" x 17'11"



FIRST FLOOR

	Metres	Feet
Sitting room	6.00 x 3.95	19'8" x 12'11"
Master bedroom	5.40 x 3.10	17'9" x 10'2"
En-suite	2.65 x 1.50	8'9" x 5'0"
Bedroom 2	3.70 x 3.30	12'2" x 10'10"
Bathroom	2.65 x 1.80	8'9" x 5'11"



SECOND FLOOR

	Metres	Feet
Bedroom 3	3.65 x 2.85	11'11" x 9'4"
Bedroom 4	3.70 x 3.65	12'1" x 11'11"
WC	1.50 x 0.90	5'0" x 3'2"

Floor plans are for illustrative purposes only, and room dimensions are maximum. Room sizes are believed to be accurate, although these may change during the construction process. Kitchen and bathroom layouts are indicative only. Specific plots may be handed. Illustrations are for guidance only. Total areas are based on Net Internal Areas. Please note floor plan alterations are subject to construction stage.