

The Ham

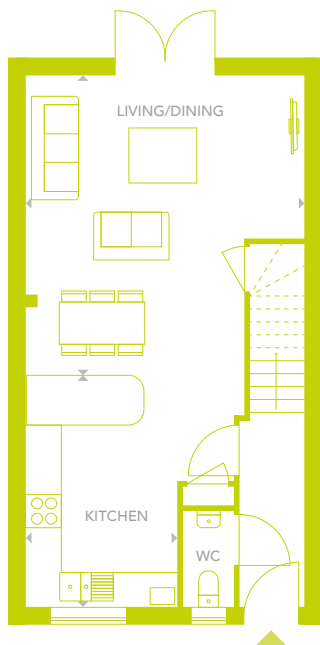
Three bed house



ROBOROUGH ECO HOMES

PLOTS: 24-29 & 74-77*

*Plots 74-77 handed



GROUND FLOOR



FIRST FLOOR

Total floor area: 94m² | 1012ft²

Dimensions	m	ft
Living/Dining	5.35 x 4.95	17'7" x 16'3"
Kitchen	4.15 x 2.70	13'7" x 8'10"
Master Bedroom	4.95 x 2.90	16'3" x 9'7"
Bedroom 2	3.50 x 2.70	11'6" x 8'11"
Bedroom 3	3.35 x 2.10	11'0" x 6'11"

A development by

 ZeroC

Part of Places for People

zeroc.co.uk/roborough roborough@zeroc.co.uk

Please note: All layouts, kitchens, floor plans, configurations, maps and information are intended for guidance only and accuracy of this information cannot be relied upon by prospective purchasers who must make their own enquiries to satisfy themselves by inspection or otherwise as to the correct detail.