

CONINGSBY PLACE

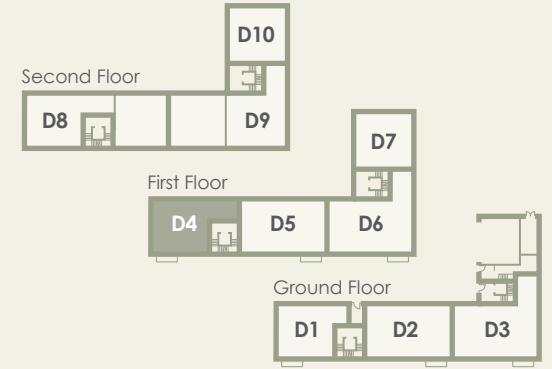
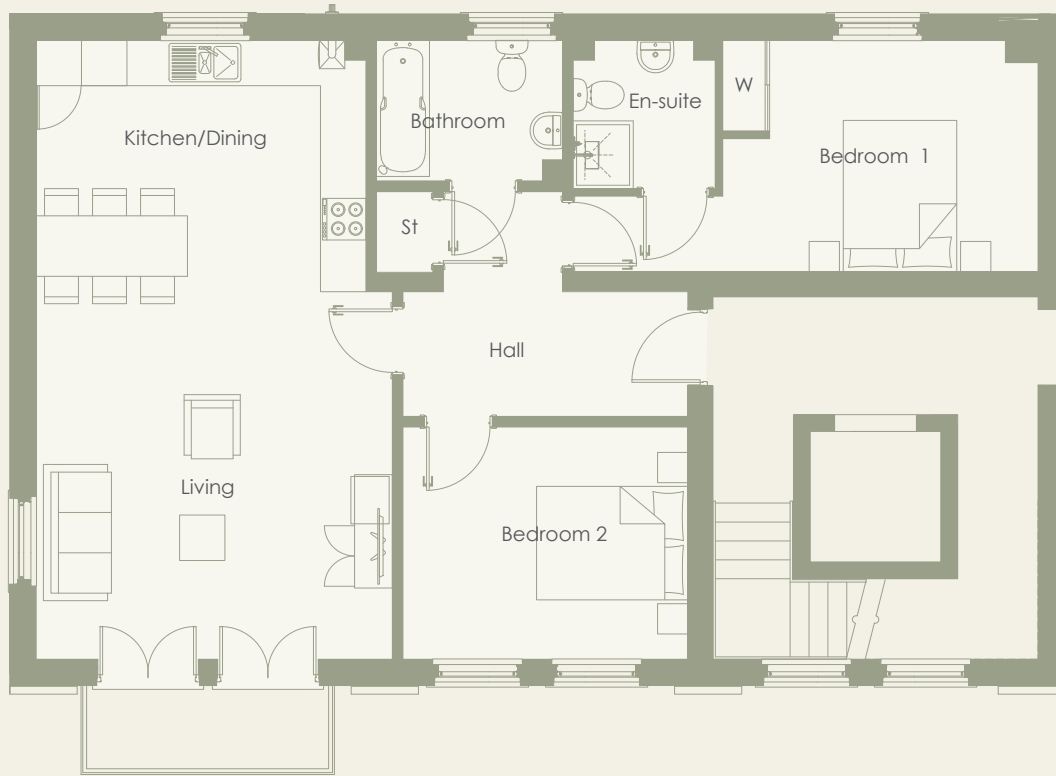
Poundbury



D4 – Two bedroom first floor apartment



zeroc



APARTMENT D4 – FIRST FLOOR

	Metres	Feet
Kitchen/Dining	4.36 x 3.32m	14'4" x 10'10"
Living	4.71 x 4.86m	15'5" x 15'11"
Store	0.74 x 1.06m	2'5" x 3'6"
Bedroom 1	4.17 x 3.06m	13'8" x 10'0"
En-Suite	1.87 x 1.96m	6'2" x 6'5"
Bedroom 2	3.76 x 3.07m	12'4" x 10'1"
Bathroom	2.46 x 1.86m	8'1" x 6'1"
Floor area	81m²	881ft²

01305 251 277

salesenquiries@zeroc.co.uk | www.zeroc.co.uk

Please note: All layouts and floor plans, configurations, maps and information are intended for guidance only and accuracy of this information cannot be relied upon by prospective purchasers who must make their own enquiries to satisfy themselves by inspection or otherwise as to the correct detail.