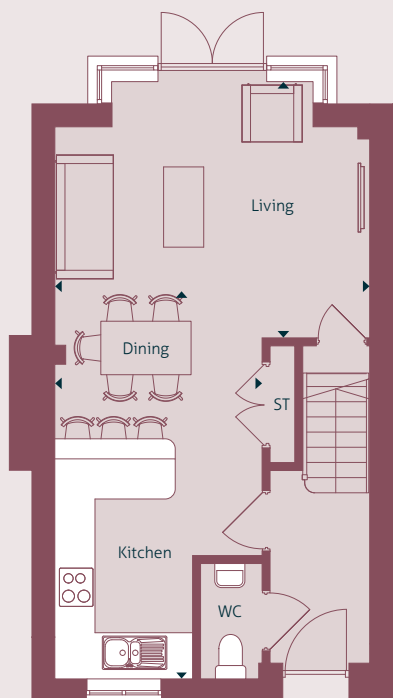


The Buckthorn (B)

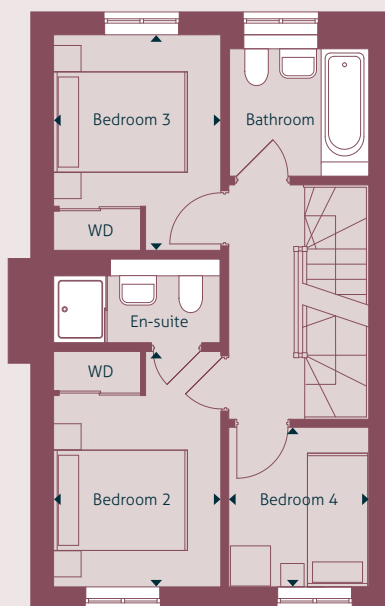
Four bedroom semi-detached house



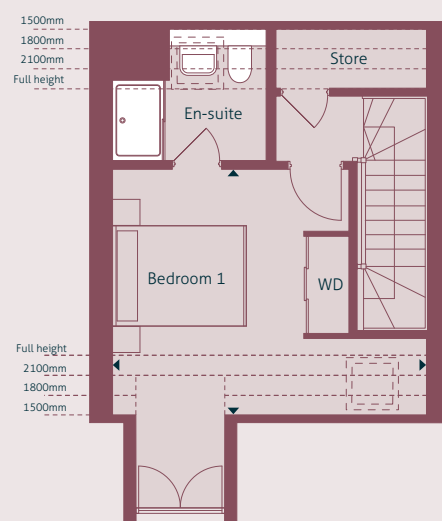
PLOTS 42 & 43*



GROUND FLOOR



FIRST FLOOR



SECOND FLOOR

Dimensions	m	ft
Living	4.79m x 3.88m	15' 8" x 12' 8"
Kitchen / Dining	5.12m x 3.15m	16' 9" x 10' 4"
Bedroom 1:	4.79m x 3.70m	15' 8" x 12' 1"
Bedroom 2:	3.57m x 2.55m	11' 8" x 8' 4"
Bedroom 3:	3.27m x 2.55m	10' 8" x 8' 4"
Bedroom 4:	2.44m x 2.14m	8' 0" x 7' 0"

Internal area: 109sq.m / 1168sq.ft

Layout shown is of plot 42
Plot handed: 43*

T: 01420 550 272
E: woolmercopse@zeroc.co.uk
www.zeroc.co.uk/woolmercopse

ZeroC
Part of Places for People

Please note: All layouts and floor plans, configurations, maps and information are intended for guidance only and accuracy of this information cannot be relied upon by prospective purchasers who must make their own enquiries to satisfy themselves by inspection or otherwise as to the correct detail.